

Ready-to-use panel for firestop compartmentalisation (1/2)

AF PANEL is a low-cost firestop product which seals any horizontal or vertical opening including pipe penetrations, cable trays, fire dampers, expansion joints – wherever there is a need to create a smoke and flame barrier.

AF PANEL has excellent acoustic and thermal insulation features and can be easily shaped to suit most common applications.

AF PANEL is a ready-to-use panel which does not require any complicated coatings before or during application.

AF PANEL is a semi-rigid non-combustible panel (class A1) made of mineral fibre treated on both sides with a layer of fireproof coating. When the two products are combined using the above methods the result is a firestop **AF PANEL** and an EI 120/EI 180 class compartmentalisation.

This barrier is simple to (totally or partially) remove and allows a quick work on service installations passing through the sealed opening.

Double panel sealing of service installation penetrations (cable trays, pipes, ventilation ducts, etc.) are certified. Single panel sealing on vertical structures is certified without service installation penetrations.

As the temperature rises above 200°C, the special product coated on the panel transforms followed by a gradual release of water vapour and energy absorption (lowering the temperature).

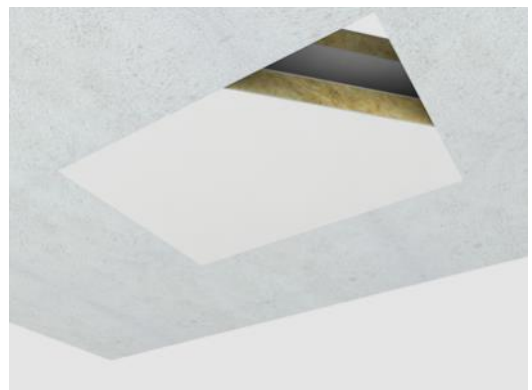
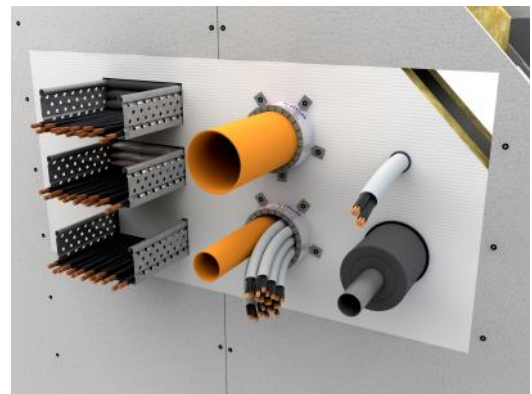
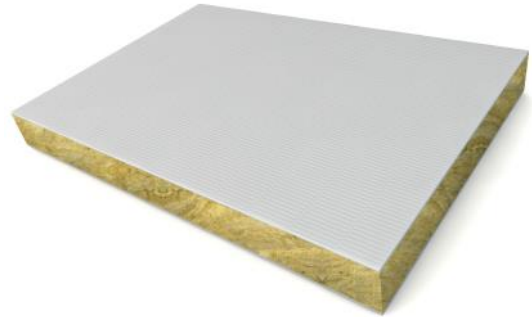
CHARACTERISTICS

Length:	1000 mm
Width:	500 mm
Size upon request:	1200X600 mm
Thickness:	52 mm
Density:	150 kg/m ³
Colour:	white
Thermal conductivity:	0.036W/mK
Average acoustic absorption:	α_s 0.64

APPLICATION METHOD:

1. measure the size and shape of the opening to be sealed;
2. place them on the panel;
3. shape the panel by using a cutter or hacksaw, making the template slightly bigger than the size of the opening to be sealed;
4. coat with a small quantity of **AF SEAL W** on the template sides or directly on the masonry inner edge and then apply the template;
5. apply the template and insert it in the opening by slotting it in;
6. smooth the joints with a spatula using **AF SEAL W** sealant.

AF SEAL W is the certified sealant for gluing **AF PANEL** together and securing them on different structures.



Ready-to-use panel for firestop compartmentalisation (2/2)

CERTIFIED APPLICATIONS

AF PANEL has been certified in combination with the main AF Systems products such as AF BAGS, AF MASA, AF COLLARS, AF SLEEVE B and AF SEAL W to:

- Seal flexible and rigid wall and floor electrical cable penetrations
- Seal flexible and rigid wall and floor combustible and metal pipe penetrations
- Seal expansion joints when their width exceeds 2 cm and wherever a smoke and flame barrier is required.
- Seal the gap between curtain walls and floors
- Seal fire dampers
- Seal false ceiling openings which have electrical system penetrations

To determine the correct reference certification, please contact our Technical Department.

PACKAGING AND STORAGE

Cardboard boxes containing five panels

On pallets

If the product is stored under standard conditions, there is no storage time limit

SPECIFICATIONS

Supply and application of the semi-rigid rock-wool **AF PANEL**. This is covered on both sides with the ablative **AF SEAL T** firestop product. The **AF PANEL** measures 1000x500x52 mm and has a nominal density of 150 kg/m³. It has **been** designed for EI 120/EI 180 fire protection of wall and floor service installations. The **AF PANEL** can be cut and shaped using a basic cutter or hacksaw. The application involves applying the **AF SEAL W** firestop sealant on joints and outer spaces. It does not require further surface treatments.

CERTIFICATIONS

Class EI 180 (UNI EN 1366-3)	Concrete floor
Class EI 180 (UNI EN 1366-3)	Gasbeton wall
Class EI 120 (UNI EN 1366-3)	Plasterboard wall
Class EI 120 (UNI EN 1366-3)	Plasterboard self-supporting wall
Class EI 120 (UNI EN 1366-3)	Sandwich wall
Class EI 120/180 (UNI EN 1366-4)	Concrete wall joints
Class EI 120/180 (UNI EN 1366-4)	Concrete floor joints
Class EI 120 (UNI EN 1366-1)	Concrete wall
Class EI 120 (UNI EN 1366-1)	Concrete floor
Class REI 120 (UNI EN 1365-2)	Fibre false ceiling

